

**motivair**<sup>®</sup>

COOLING SOLUTIONS



**HDU** heat  
dissipation  
unit™

OUR BUSINESS IS COOLING YOURS™

[motivaircorp.com](http://motivaircorp.com)

# DEPLOY LIQUID COOLING IN YOUR AIR-COOLED DATA CENTER

Designed for use in air-cooled data centers where central chilled water is unavailable. Motivair's Heat Dissipation Unit™ (HDU) allows you to deploy liquid cooling in your data center environment without impacting your infrastructure.

Unlike a Coolant Distribution Unit (CDU) that rejects heat from the server rack to the chilled water loop of the building, a Heat Dissipation Unit™ (HDU) rejects the server heat from the server rack to the white space where building air conditioning would then remove that heat.

## FLOOR MOUNT FEATURES

- Capacity up to 144 KW
- Hot swappable fans and pumps
- Redundant circulation pumps
- Leak detection system
- Made in the USA

## IN-RACK FEATURES

- Front panel mounted display
- N+1 fan redundancy
- Hot swappable fans
- Leak detection system and remote coolant feeder pump and tank for filling
- Optional external bypass kit allows in-rack unit to be used to cool a single server or a single cold plate with controllable flows down to 1 lpm while still maintaining the desired cooling capability.
- Optional casters for mobility on site.
- Integrated flow meter with display.
- Made in the USA



**APPLICATION**  
On-Chip Cooling,  
High-Performance Cooling,  
and Direct Liquid Cooling



## SPECIFICATIONS

Models	MHDU-5910	MHDU-5901	MHDU-5900	MHDU 15	MHDU 10
<b>MHDU Dimensions (in):</b>					
Height:	90.5	90.5	90.5	17.25	17.25
Width:	23.5	23.5	23.5	17.35	17.35
Depth:	54.3	54.3	54.3	32.5	32.5
<b>Nominal Cooling Capacity (kW):</b>					
77 F air temperature/113 F liquid supply temperature	144	118	91	15	10
77 F air temperature/ 95 F liquid supply temperature	72	60	45	8	6
<b>Piping Size (IN)</b>	1"x 2	1"x 2	1"x 2	1"	1"
<b>Nominal Flow Rate (GPM)</b>	32	32	32	18	18
<b>Piping Type</b>	Non-Ferrous	Non-Ferrous	Non-Ferrous	Non-Ferrous	Non-Ferrous
<b>Electrical</b>	230 VAC, 1 ph, 208 - 417 VAC, 3 ph, 50/60 Hz	230 VAC, 1 ph, 208 - 417 VAC, 3 ph, 50/60 Hz	208-230V – 1 Ph – 50/60Hz	208-230 VAC, 1 ph, 50/60 Hz	208-230 VAC, 1 ph, 50/60 Hz

©2022 Motivair Corporation. Motivair reserves the right to modify specifications without notice. Reproduction of this brochure in whole or part is prohibited. Heat Dissipation Unit (HDU)<sup>™</sup> are trademarks of Motivair Corporation

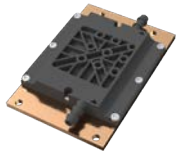
# **motivair**<sup>®</sup>

## COOLING SOLUTIONS



### **COOLANT DISTRIBUTION UNIT (CDU)**

A CDU provides the ability to deploy higher density, load diverse IT equipment in a smaller footprint while at the same time improving a facility's overall efficiency (PUE) and life expectancy. The CDU provides 100% sensible cooling up to 2.3MW, depending on the model. For use with the ChilledDoor<sup>®</sup> or other IT cooling systems.



### **DYNAMIC COLD PLATE™**

Motivair's Dynamic Cold Plate™ harnesses innovative fluid dynamics to redefine direct liquid cooling. Our patent pending technology enables robust performance without the use of skived microchannels. It allows CPUs and GPUs to operate at peak performance while reducing the possibility of cooling degradation and costly system failures.



### **SERVICE & MAINTENANCE PROGRAM**

Motivair<sup>®</sup> provides customer-focused service and support for your mission critical equipment. We offer site surveys, installation services, Level III Commissioning support, service agreements, and extended warranties on parts.



### **CHILLED DOOR<sup>®</sup> RACK COOLING SYSTEM**

Advanced server rack cooling system fits any standard or OEM computer rack. Removes up to 75 kW of server heat per door.



### **MODULAR DATA CENTER**

Backed by our ChilledDoor<sup>®</sup> and Coolant Distribution Unit (CDU) technology, our Modular HPC Data Center can accommodate power densities of up to 75 kw/rack in air cooled systems and 150 kw/rack for modern liquid-cooled supercomputers and HPC clusters. Each system can be equipped with Motivair's integrated Free-Cooling Chiller technology or warm water fluid cooling systems for maximum uptime and efficiency.

5900 Genesee St.  
Lancaster, NY 14086  
Tel: 716-691-9222